

# SELBY ABBEY ACCESSIBILITY GUIDE



Email: [office@selbyabbey.org.uk](mailto:office@selbyabbey.org.uk) phone: 01757 703123  
website: <https://www.selbyabbey.org.uk/>

For specific accessibility enquiries please contact the office at: [office@selbyabbey.org.uk](mailto:office@selbyabbey.org.uk)



## WELCOME

Selby Abbey sits in the heart of Selby town centre. We have been serving the community since 1069 and provide a warm welcome for everybody who visits us.

Whether you wish to visit for worship, as a heritage attraction, for events we host or wish to enjoy some light refreshments in our coffee shop we guarantee you will not be disappointed.

We are fully wheelchair accessible, provide a hearing loop and can also supply a sensory map, which is available from the welcome desk or our website if you wish to view this prior to visiting.

If you require any further information, advice, or specific accommodations, please do not hesitate to get in contact with us.

Photographs in this guide have been supplied by Duncan Lomax (Ravage Productions) or are property of Selby Abbey.

*This page is intentionally left blank*

# CONTENTS

<b>AT A GLANCE .....</b>	<b>5</b>
<b>LEVEL ACCESS.....</b>	<b>5</b>
<b>HEARING .....</b>	<b>5</b>
<b>VISUAL .....</b>	<b>5</b>
<b>GETTING HERE.....</b>	<b>6</b>
<b>PARKING .....</b>	<b>6</b>
<b>PUBLIC TRANSPORT .....</b>	<b>7</b>
<b>BIKES.....</b>	<b>9</b>
<b>ARRIVAL AND ENTRANCE.....</b>	<b>10</b>
<b>INSIDE THE ABBEY .....</b>	<b>13</b>
<b>SOUTH TRANSEPT .....</b>	<b>13</b>
<b>CHOIR STALL AND CHANCEL .....</b>	<b>14</b>
<b>ALTAR.....</b>	<b>15</b>
<b>NAVE.....</b>	<b>15</b>
<b>LADY CHAPEL .....</b>	<b>16</b>
<b>ST NICHOLAS CENTRE .....</b>	<b>16</b>
<b>WELCOME/INFORMATION DESK.....</b>	<b>18</b>
<b>COFFEE AND GIFT SHOP (NORTH TRANSEPT) .....</b>	<b>18</b>
<b>TOILET FACILITIES (NORTH TRANSEPT) .....</b>	<b>19</b>
<b>TOURS.....</b>	<b>20</b>
<b>ABBAY GROUNDS.....</b>	<b>20</b>
<b>SUPPORT .....</b>	<b>21</b>
<b>ACCESSIBILITY EQUIPMENT .....</b>	<b>21</b>
<b>EMERGENCY EVACUATION PROCEDURES.....</b>	<b>21</b>
<b>CUSTOMER CARE.....</b>	<b>21</b>

*This page is intentionally left blank*

## AT A GLANCE

### LEVEL ACCESS

Our level access entrance is our south door.



From our south door there is level access to:

- The South transept
- Nave
- Main entrance and welcome desk
- St Nicholas Centre (Side Chapel)
- Chapel of St Germain
- Lady Chapel – including our 14<sup>th</sup> century Tree of Jesse window
- Chapel of Resurrection
- North transept – including our coffee shop and gift shop
- Accessible toileting facilities through the North transept
- Abbey office

There is an internal ramp, from the south side of the Abbey, offering level access to:

- The choir stalls
- Chancel.
- Organ

Unfortunately, our tower tours are not accessible for those with limited mobility due to the number of steps and enclosed spaces. We are currently working on alternatives to make the views and experience accessible.

### HEARING

- We have a hearing loop in the nave of the church.

### VISUAL

- Contrast markings are placed on all glass doors
- Some parts of the venue are in low lighting
- We have large prints of our welcome leaflets available from the welcome desk.



## GETTING HERE

Selby Abbey,  
The Crescent,  
Selby,  
YO8 4PU

## PARKING

The Abbey has no visitor parking, however, are several municipal car parks close to the Abbey. The nearest short stay car park can be found:

Selby Park,  
Park Row,  
Selby,  
YO8 4PR

This car park is approximately 0.1 miles from the Abbey when following public roads, however the Abbey can be accessed by cutting across the park which has tarmac pathways. These pathways, in places, are sloped. The streets are fully lit with streetlamps after dark, as is the car park. The car park has one disabled bay, however visitors can park in any space, display their badge and access disabled concessions listed below. The surface of the car park is tarmac and is level.



Images of Park Row car park

The nearest long stay car park is:

Back Micklegate Long Stay,  
1 Micklegate,  
Selby,  
YO8 3GH

This car park is 0.3 miles and a 6 minute walk. The car park is tarmacked and lit with streetlamps.



Back Micklegate car park

Selby District Council disabled parking concessions:

- Selby District Council offers free parking to disabled drivers if a valid blue badge is displayed.
- There are disabled bays located in the car parks.
- Drivers with blue badges are permitted to stay longer in short stay car parks than the designated time.

A map of all car parks can be accessed here:

[https://www.selby.gov.uk/sites/default/files/Documents/Selby\\_Car\\_Park\\_Provision\\_Existing\\_FINAL.pdf](https://www.selby.gov.uk/sites/default/files/Documents/Selby_Car_Park_Provision_Existing_FINAL.pdf)

## **PUBLIC TRANSPORT**

The Abbey is accessible via bus or train. Both routes have level access and pelican crossings over the main roads.

### **Bus**

- The nearest bus stop is Park Street Shelter, Stop ID: 32000005
- The stop is situated 150 yards from Selby Abbey, around a 2minute walk
- If the bus you require does not stop at this shelter, the bus station is 0.1 miles from the Abbey and approximately a 2minute walk.
- Arriva operates from Selby offering services to and from York, Goole, Cawood, Leeds, Doncaster, Pontefract, as well as surrounding villages and towns passing through the routes.
- Timetables can be accessed here:  
<https://www.arrivabus.co.uk/yorkshire/explore/selby/>





Park Street Shelter



Selby Bus Station

#### Train

- The nearest train station is Selby station on Station Road.
- The station is 0.3 miles from the Abbey, approximately a 5minute walk



- Selby is a main stop on the Transpennine and Northern Rail services. Services from Hull, Leeds, and York, as well as further afield stop regularly.
- If you require assistance at this station you need to ring the number 0800 107 2149. The station is only accessible during the hours it is staffed and there is no step free access to platforms 2 and 3. Staff will assist those requiring to use these platforms via a barrow crossing. For more information on the accessibility of this station please visit this website: <https://www.nationalrail.co.uk/stations/sby/details.html>



Selby railway station

## BIKES

The Abbey welcomes bikers. You can leave your bikes within the Abbey or lock them up outside.

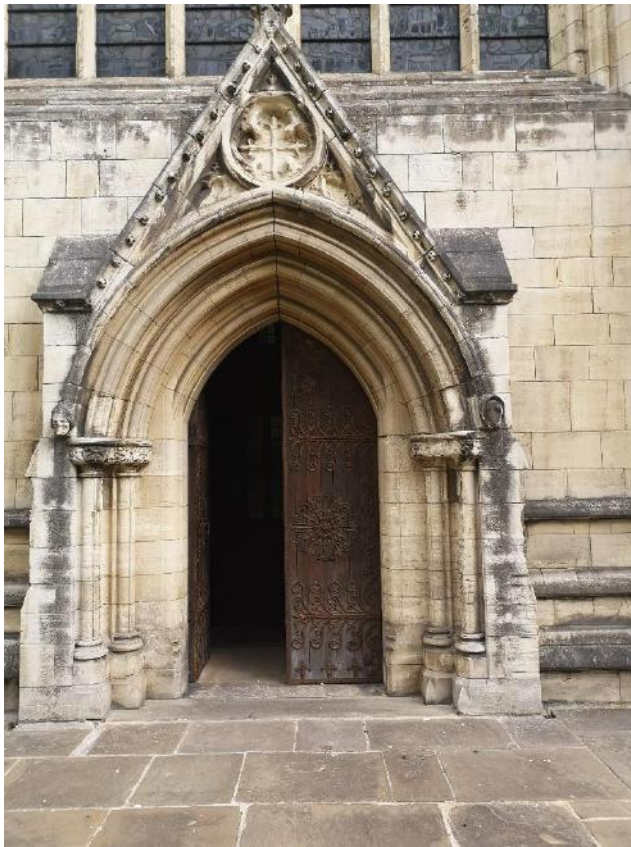
## ARRIVAL AND ENTRANCE

From the street to the south entrance there is level access. Our designated disabled entrance is our south door which can be accessed from main road (The Crescent). The path from the main street to the Abbey is 2400mm wide and stone paved. There is a slight slope downwards and you may find, in places, this path is uneven (please see the image below).



South pathway

The outer south door is 700mm and can be opened to 1400mm when required. Our outer brown doors are left open during our opening hours. Once you have entered the door into the vestibule, there is a smaller door to the left with an automatic push button to open it. This door is 800mm and the door opens into the Abbey.



South door



South door inside vestibule



South door vestibule with access push button.



If you wish to enter at our west door, there are steps leading from the market square. The path from the market square to our door is 2620mm wide and stone paved. Our outer doors are 2700mm wide and again, these are left open during our opening hours. There is another set of doors inside the vestibule which requires the visitor to turn the handle and push. There is also a threshold. These doors allow an entrance space of 630mm, however, weather and event dependant we will fully open these doors allowing an entrance space of 1320mm. If you require assistance to enter this door or require us to fully open them please make us aware, however, please note our designated disabled access is our south door.



Path leading to the west door



Steps leading to the west door



West Entrance to the Abbey



Image of internal west doors requiring the use of a handle.



## INSIDE THE ABBEY

Once inside the Abbey much of the ground is stone paved and level. You may find some ridges and unevenness over certain stones to the west of the building.



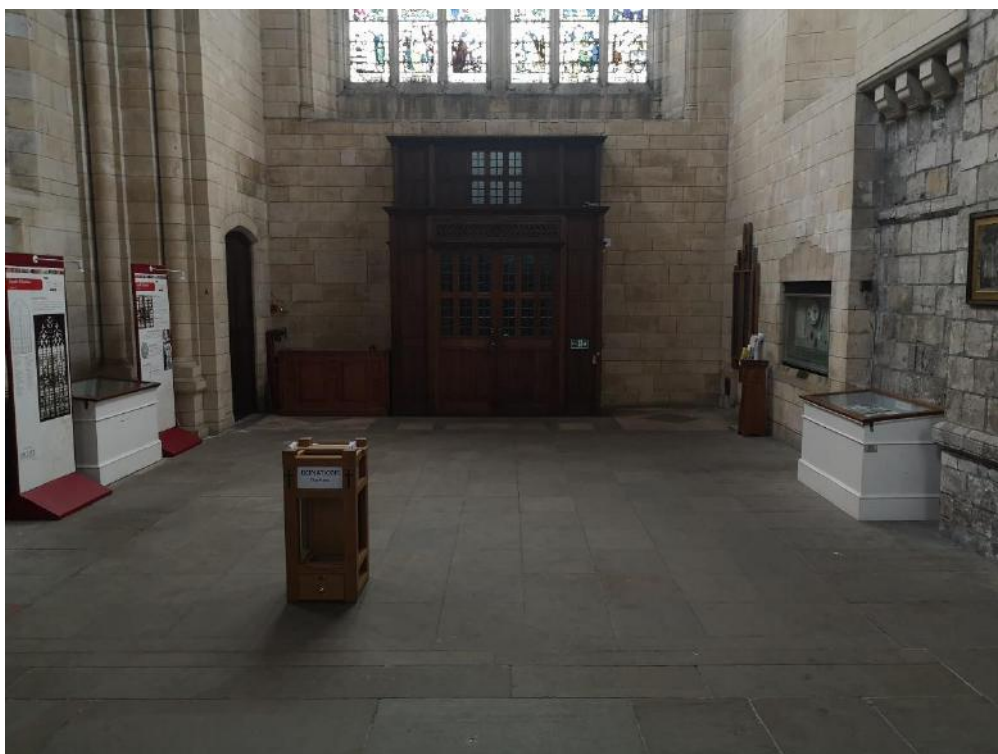
Stone paved flooring inside the Abbey



Example of some unevenness towards the west of the Abbey

## SOUTH TRANSEPT

The south transept is level and stone paved. There are cases housing some of the Abbeys exhibits, these are flat against the walls. There is also a donations box near the south entrance.

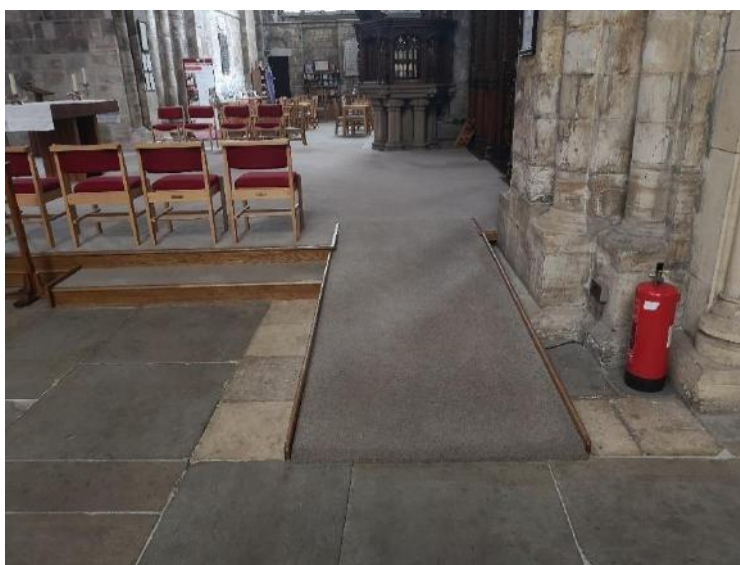


South transept

## CHOIR STALL AND CHANCEL

If you wish to view the choir stalls and chancel, there is a small ramp near the south entrance that makes these areas accessible. The width of the ramp is 1145mm. Both the ramp and the flooring in the choir and chancel areas are carpeted. There are some areas of the choir and chancel which are tiled (the black and white tiles on the image below).

The narrowest part of this path is 1515mm, which is also the entrance to the area.



Ramp near the south entrance

There are a small set of steps either side of the chancel leading to the North and South sides of the Abbey. The archway that houses these steps is 915mm. These do not need to be used if you wish to enter the area as the ramp provides level access.



Image of chancel steps

## **ALTAR**

The altar is not accessible to the public however you are able to view it from the chancel. There is space available to kneel and pray or reflect in the chancel.

## **NAVE**

The Nave is level and stone paved. There is usually seating available. Some events require us to move our seating. Please contact us ahead of your visit if this is an access requirement for you. There is seating available in our coffee shop also.

The seating is usually set out in two rows. The space between these chairs is normally 1600mm. While the isle is stone paved, the area under the seating is wooden parquet.

We regularly have music playing through our speaker system that is in keeping with the ambience of the church.

Please be aware that when services, weddings, baptisms, funerals, and other events are held this area especially can become very busy and there may be singing and loud music. Service times and events can be found on our website. If you are particularly sensitive to noise please email or ring ahead so we can inform you if we have a wedding, funeral or other event that may cause the noise levels to rise.



Image of the nave

### **LADY CHAPEL**

There is seating available in this chapel to sit, reflect and admire our 14<sup>th</sup> century Tree of Jesse window.

Connecting our Lady Chapel to our Chapel of the Resurrection is a wooden arch frame. This is 1100mm wide with no threshold.

### **ST NICHOLAS CENTRE**

The St Nicholas Centre is both flat and carpeted with seating available.



This area is sometimes used for services, meetings, and events, however if it is not in use you are more than welcome to use the space for quiet reflection. Due to the rooms multipurpose use the setup changes regularly. The doorway into the centre is 870mm.



St. Nicholas Centre



St. Nicholas Centre doorway

## **WELCOME/INFORMATION DESK**

The welcome desk is situated at our main west door entrance. Usually one of our welcomers is on hand to provide any information you may require. They are able to provide guidebooks, trail leaflets, information on services and answer other questions you may have about the Abbey. There will also be a hard copy of this access guide available from the desk.



Welcome desk

## **COFFEE AND GIFT SHOP (NORTH TRANSEPT)**

Our coffee and gift shop has level access from both entrances. It is stone paved and tables seat anywhere from one to six people. We can move tables and furniture if you have more guests or access requirements.

Often there is background music in the coffee and gift shop as it sits within the wider church. If a service or event is on, please be aware the noise from the event will be able to be heard in the coffee shop.

Our tables and chairs are a light wood and we use white plates and mugs. This provides a contrast.

The route through the coffee shop is no less than 720mm, with the average route being 1670mm.



Coffee shop

### **TOILET FACILITIES (NORTH TRANSEPT)**

Accessible toileting facilities are available to the right of the coffee and gift shop. No key is required to access the facilities. The accessible cubicle is situated within the unisex toilet facilities.

- The toilet arch way leading to the toilet door from the coffee shop is 870mm.
- The toilet door, cubicle door, and walkway into the facilities is 930mm wide.
- Access to these toilets is level.
- The height of the toilet seat is 445mm.
- The height of the sink is 740mm.
- The cubicle dimensions are 1500mm X 2200mm
- In the accessible cubicle there are grab rails by the toilet, sink, on the walls, and on the back of the door.
- There is an emergency pull cord.
- There are baby changing facilities within this cubicle.



Facilities



Accessible cubicle

## TOURS

Tours are available to pre book by emailing or phoning the office:

- Email: [office@selbyabbey.org.uk](mailto:office@selbyabbey.org.uk)
- Phone: 01757 703123

Tours in the main body of the Abbey are all level access and suitable for wheelchairs.

Unfortunately, our tower tours are unsuitable for individuals with mobility impairments. Due to the nature of the building we are unable to adjust these tours to make them suitable, however our welcomers will be able to provide you with information about the tower.

If you have specific access requirements please let us know upon booking so we can make sure all elements of the tour is accessible for your group.

## ABBEY GROUNDS

There is a path surrounding the Abbey that is stone paved and 740mm at the narrowest point (from the south door round the east of the building). This allows you to view the Abbey grounds. Most of the grounds is grass and unsuitable for wheelchair access.



## **SUPPORT**

### **ACCESSIBILITY EQUIPMENT**

- We are dog friendly and are able to provide water bowls.
- There is no specified fenced assistance dog toileting areas in Selby, however the most appropriate would be Selby Park or in the corner of one of the car parks.
- We have hearing loop in all public areas.

### **EMERGENCY EVACUATION PROCEDURES**

- We have emergency evacuation procedures for all disabled visitors.
- In the event of an emergency visitors with disabilities will be led to safety by a member of staff or the fire brigade.

### **CUSTOMER CARE**

- Large font material is available from the welcome desk.
- Events where a BSL interpreter is present will be listed on the event information and flyers.

---

**GUIDE LAST UPDATED: 17/06/2020**

## **COVID-19 UPDATE**

**PLEASE NOTE THAT THIS UPDATE OVERRULES SOME OF THE INFORMATION IN THE GUIDE. PLEASE REFER TO THIS, SUPPLEMENTED BY THE ORIGINAL ACCESS GUIDE UNTIL FURTHER NOTICE.**

As of 04/07/2020 the Abbey reopened for more than just private prayer. As part of our ongoing efforts to protect our congregation, volunteers, visitors and wider community from COVID-19, the Abbey has made some changes to how it operates for your protection.

### **HYGIENE AND CLEANING**

We ask all our visitors:

- Wear a face covering if you are able.
- Use the hand sanitiser that is placed out around the Abbey.
- Respect social distancing measures.

### **CHANGES TO OUR OPERATIONS**

- The Abbey is now open 10-3.
- We operate solely from the South Door (our accessible entrance).
- Our accessible toilet facilities are open and cleaned on a regular basis.
- Our coffee shop is open Mondays and Saturdays ONLY from 10:30-14:00. All the tables are at least 1m apart, most at least 2m. When you order at the till, you are required to provide us with your table number and details for track and trace. We will then bring your refreshments to you.
- Our south choir aisle, altar, and choir are now only available to view when guided by one of our welcomers on the door. This helps us to control touch points and hard to clean areas. Please let us know if you would like to visit the areas and we would be more than happy to take you.
- We now operate a contactless donation point and take contactless payments in our shop/coffee shop.
- Chairs have been cleared from the Nave with some remaining for reflection. These are rotated daily and quarantined for 72 hours.
- Candles are still available to light. We do ask that you discard your taper in the labelled pot to help reduce our touch points.
- Prayer leaflets are available throughout the Abbey. Please take these away with you or discard them in the waste bin. This will help reduce our touch points and keep us COVID secure.

---

**LAST UPDATED 10/08/2020**